

# Local Overview

*Croydon*

February 2021



INTELLIGENT  
LONDON

## Purpose of this dashboard

This dashboard draws together a range of performance indicators into a concise, graphical report. It compares your Local Authority performance against all other London LAs and England, and shows trends over time. It can be used to:

- identify relative strengths and weaknesses in performance
- plan and commission services
- inform self-evaluation and set targets
- demonstrate impact and effectiveness

## Contents

<b>How to interpret the analysis</b>	<b>3</b>
<b>Local Landscape</b>	<b>4</b>
<b>Pupil characteristics and behaviour</b>	<b>5</b>
<b>Secondary and post-16 attainment</b>	<b>6</b>
<b>Pupil destinations</b>	<b>7</b>
<b>Participation and travel</b>	<b>8</b>
<b>Notes</b>	<b>9</b>

## Latest updates

**Updated:** Absence - 2019/20 Autumn term

**Updated:** Key Stage 4 Destinations - 2018/19 (Revised)

**Updated:** Key Stage 5 Destinations - 2018/19 (Revised)

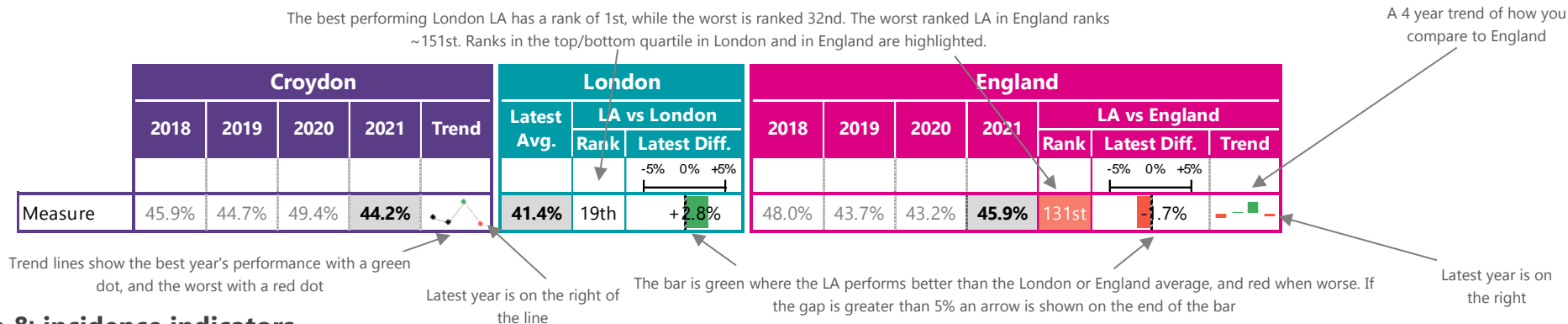
### How to interpret the analysis

Each indicator on the dashboard has:

- a trend line to show the LA's change over time for up to four years (subject to availability of the data)
- a rank of the LA indicator against the 32 other London LAs and the 152 LAs nationally (although in some instances some LA data is suppressed and therefore excluded from the rankings)
- two bar charts showing the difference to the London average and the national average. Note that if the indicator is a percentage the difference is in percentage points; for example, 20% vs 23% is a 3% point difference. If the indicator is a number, the difference is a percentage, for example, 100 vs 110 is a 10% difference.
- a 4 year trend showing how the LA performs vs national based on the same basis as the two bar charts. The latest year of data is on the right. There are two types of indicator, performance indicators and volume & incidence indicators, as shown below:

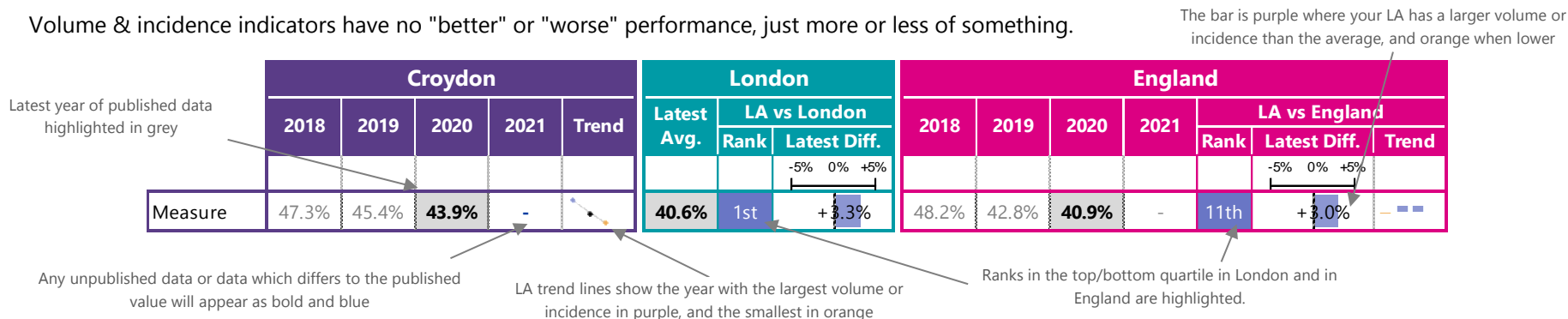
### Performance indicators

Performance indicators are those that allow the measurement of "better" or "worse" performance. Note that for some performance indicators better performance means a higher percentage (e.g. achievement of attainment thresholds), while in other cases lower means better (e.g. absence rates).

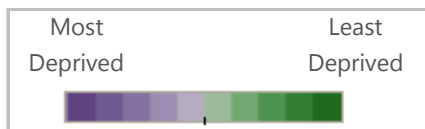
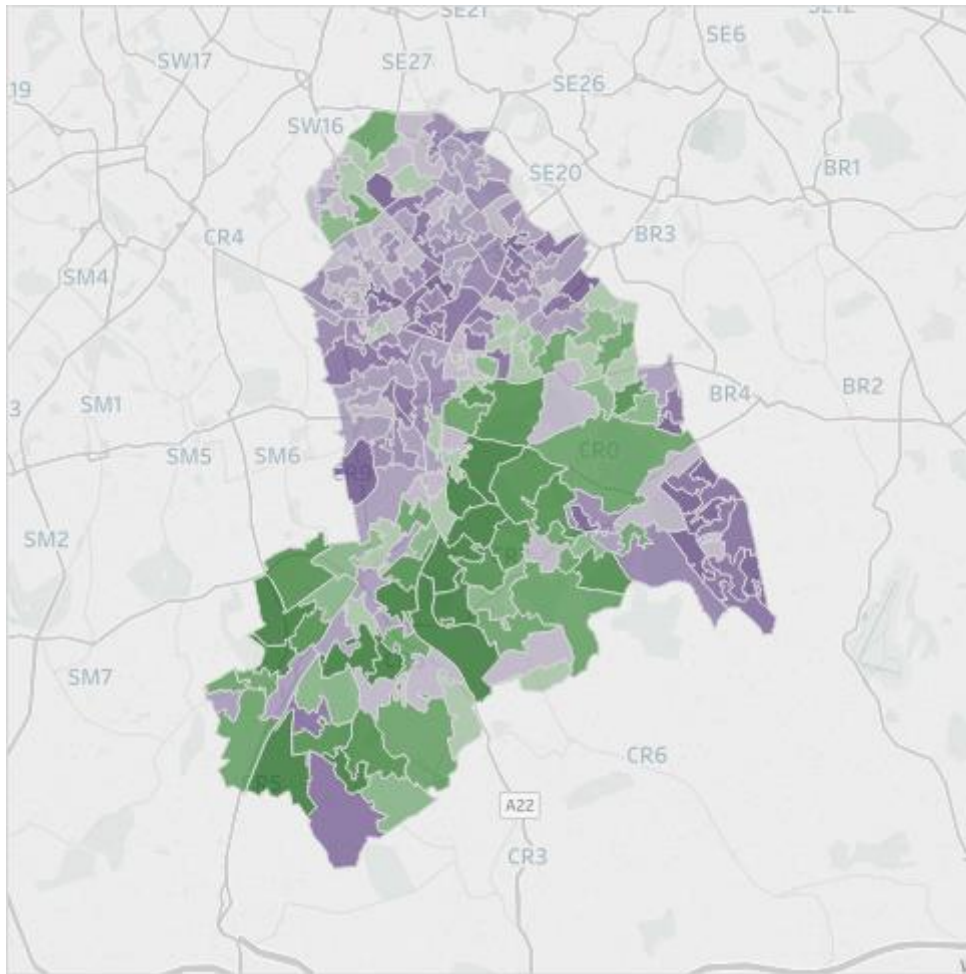


### Volume & incidence indicators

Volume & incidence indicators have no "better" or "worse" performance, just more or less of something.



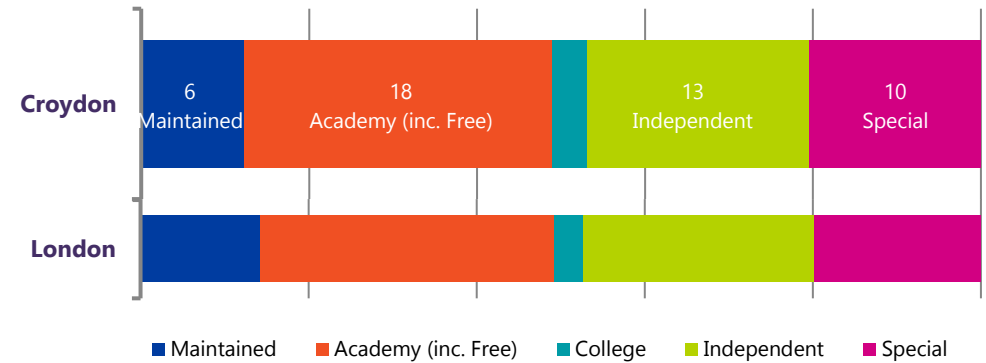
## Income Deprivation Affecting Children (IDACI) Map



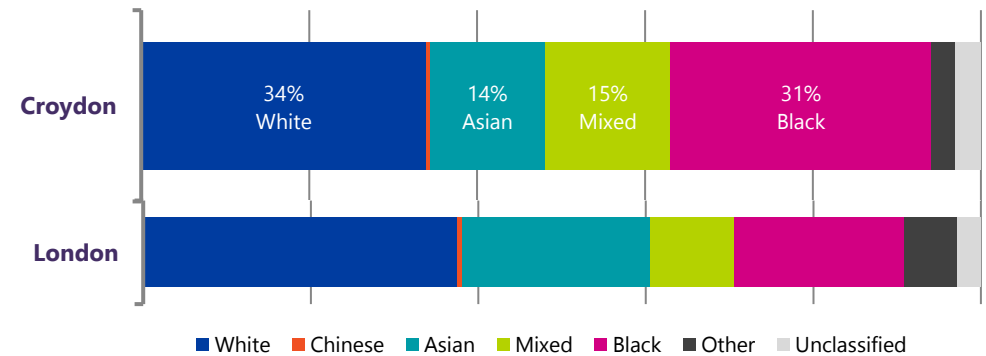
Deprivation ranks are based on the 2019 Income Deprivation Affecting Children Index (IDACI). This ranks each LSOA (an area of about 1000 households) in order of the 32,844 LSOAs nationally. LSOAs are grouped into 10 coloured bands, where the darkest purple is an LSOA in the 10% most deprived nationally, and darkest green is in the 10% least deprived nationally.

## Breakdown Analysis

### Composition of Secondary and Post-16 Provision



### Ethnicity



		Croydon					London			England						
		2017	2018	2019	2020	Trend	Latest Avg.	LA vs London		2017	2018	2019	2020	LA vs England		
								Rank	Latest Diff.					Rank	Latest Diff.	Trend
LA	roll															
	Secondary state-funded pupil roll	22,206	22,196	22,965	<b>23,468</b>											
	Special school state-funded pupil roll	819	936	1,009	<b>1,087</b>											
Demographics	Secondary															
	Free School Meals eligible % (FSM)	16.6%	17.4%	19.9%	<b>21.3%</b>		<b>19.0%</b>	22nd	+2.3%	12.9%	12.4%	14.1%	<b>15.9%</b>	116th	+5.4%	
	English as additional language % (EAL)	26.2%	26.8%	26.3%	<b>25.9%</b>		<b>40.7%</b>	28th	-14.8%	16.2%	16.6%	16.9%	<b>17.1%</b>	42nd	+3.8%	
	SEN Support %	10.8%	10.9%	11.1%	<b>11.8%</b>		<b>10.5%</b>	10th	+1.3%	10.7%	10.6%	10.8%	<b>11.1%</b>	61st	+0.7%	
	SEN education, health and care plan % (EHCP)	1.9%	2.0%	2.1%	<b>2.0%</b>		<b>2.1%</b>	18th	-0.1%	1.7%	1.6%	1.7%	<b>1.8%</b>	56th	+0.2%	
Abs. ^ & Excl.	Secondary															
	Exclusions - Fixed Term (Secondary %)	7.6%	7.8%	<b>7.3%</b>	-		<b>7.9%</b>	16th	-0.6%	9.4%	10.1%	<b>10.7%</b>	-	36th	-3.4%	
	Exclusions - Permanent (Secondary %)	0.13%	0.13%	<b>0.13%</b>	-		<b>0.16%</b>	9th	-0.03%	0.20%	0.20%	<b>0.20%</b>	-	37th	-0.07%	
	Absence - Overall	5.2%	5.3%	5.3%	<b>5.2%</b>		<b>4.8%</b>	28th	+0.4%	5.4%	5.5%	5.5%	<b>5.6%</b>	48th	-0.4%	
	Absence - Authorised	3.3%	3.2%	3.2%	<b>3.4%</b>		<b>3.4%</b>	21st	0.0%	3.8%	3.9%	3.7%	<b>4.0%</b>	35th	-0.6%	
	Absence - Unauthorised	1.9%	2.1%	2.1%	<b>1.8%</b>		<b>1.5%</b>	26th	+0.3%	1.5%	1.6%	1.8%	<b>1.6%</b>	98th	+0.2%	
	Absence - Persistent Absentees	12.9%	13.1%	13.2%	<b>14.4%</b>		<b>12.5%</b>	29th	+1.9%	13.5%	13.9%	13.7%	<b>15.0%</b>	61st	-0.6%	

^ Absence data for 2020 is for the Autumn term only due to COVID-19 related school closures in the Spring and Summer terms. It is therefore not directly comparable with other years.

London rank is generally out of 32. National Rank is generally out of ~151. This may vary slightly if any relevant authorities are suppressed for a particular metric. '-' means data is unavailable. '\*' means no data or that data is suppressed for data protection reasons.

		Croydon					London			England									
		2017	2018	2019	2020	Trend	Latest Avg.	LA vs London		2017	2018	2019	2020	LA vs England					
								Rank	Latest Diff.					Rank	Latest Diff.	Trend			
KS4 <sup>^</sup>	Headline	Attainment 8	45.0	45.8	45.5	<b>48.9</b>		<b>53.2</b>	31st		-8.1%	46.4	46.6	46.8	<b>50.2</b>	90th		-2.6%	
		Progress 8	+0.06	+0.07	<b>+0.07</b>	-		<b>+0.22</b>	25th		-0.15	-0.03	-0.02	<b>-0.03</b>	-	41st		+0.10	
		9-4 English & maths	61%	63%	61%	<b>69%</b>		<b>75%</b>	30th		-6%	64%	64%	65%	<b>71%</b>	101st		-2%	
		9-5 English & maths	41%	42%	41%	<b>49%</b>		<b>55%</b>	29th		-6%	43%	43%	43%	<b>50%</b>	76th		-1%	
EBacc	English Baccalaureate APS	-	4.0	4.0	<b>4.3</b>		<b>4.8</b>	32nd		-10.4%	-	4.1	4.1	<b>4.4</b>	86th		-1.8%		
	English Baccalaureate Entries	43%	46%	47%	<b>45%</b>		<b>55%</b>	29th		-10%	38%	38%	40%	<b>40%</b>	42nd		+5%		
	English Baccalaureate (9-4)	24%	24%	24%	<b>29%</b>		<b>41%</b>	32nd		-12%	24%	24%	25%	<b>30%</b>	73rd		-1%		
	English Baccalaureate (9-5)	21%	16%	15%	<b>20%</b>		<b>29%</b>	32nd		-9%	21%	17%	17%	<b>21%</b>	76th		-1%		
Post-16	KS5 <sup>^</sup>	APS per Entry - All level 3	33.7	28.3	29.1	<b>34.3</b>		<b>37.5</b>	31st		-8.5%	32.3	31.8	32.2	<b>36.8</b>	129th		-6.8%	
		A level	28.4	27.9	29.4	<b>36.8</b>		<b>38.9</b>	28th		-5.4%	31.1	32.1	32.9	<b>38.4</b>	115th		-4.2%	
		Academic	28.5	28.0	29.4	<b>36.8</b>		<b>38.9</b>	27th		-5.4%	31.3	32.3	33.0	<b>38.4</b>	114th		-4.2%	
		Tech level	38.6	31.4	30.6	<b>31.2</b>		<b>31.5</b>	16th		-0.9%	32.3	28.1	28.6	<b>29.8</b>	56th		+4.8%	
		Applied General	40.3	28.2	27.6	<b>28.8</b>		<b>31.1</b>	28th		-7.5%	35.7	28.4	28.9	<b>31.2</b>	130th		-7.7%	
		AAB at A level, at least 2 are facilitating	8%	6%	7%	<b>15%</b>		<b>24%</b>	27th		-9%	14%	14%	14%	<b>21%</b>	118th		-6%	
		Three A*-A grades or better at A level	6%	5%	4%	<b>14%</b>		<b>21%</b>	28th		-7%	11%	11%	11%	<b>20%</b>	127th		-6%	
By age 19	Qualified to Level 2 by 19 - All Pupils	86%	85%	<b>84%</b>	-		<b>85%</b>	21st		-1%	84%	82%	<b>82%</b>	-	43rd		-2%		
	Qualified to Level 2 inc Eng & maths by 19 - All Pupils	69%	69%	<b>68%</b>	-		<b>71%</b>	26th		-3%	69%	68%	<b>69%</b>	-	85th		-1%		
	<i>FSM Eligible</i>	55%	50%	<b>51%</b>	-		<b>57%</b>	25th		-6%	45%	43%	<b>44%</b>	-	31st		+7%		
	<i>Not FSM Eligible</i>	72%	73%	<b>71%</b>	-		<b>75%</b>	26th		-4%	73%	72%	<b>72%</b>	-	94th		-1%		
	Qualified to Level 3 by 19 - All Pupils	63%	62%	<b>61%</b>	-		<b>66%</b>	27th		-5%	57%	57%	<b>57%</b>	-	39th		+4%		
	<i>FSM Eligible</i>	49%	46%	<b>47%</b>	-		<b>52%</b>	22nd		-5%	36%	35%	<b>35%</b>	-	26th		+12%		
<i>Not FSM Eligible</i>	66%	65%	<b>64%</b>	-		<b>69%</b>	27th		-5%	61%	61%	<b>60%</b>	-	39th		+4%			

<sup>^</sup>Due to the cancellation of exams in response to COVID-19 and the change to using teacher assessments, 2020 KS4 exam results are not directly comparable with other years.

London rank is generally out of 32. National Rank is generally out of ~151. This may vary slightly if any relevant authorities are suppressed for a particular metric. '-' means data is unavailable. '\*' means no data or that data is suppressed for data protection reasons.

		Croydon					London			England								
		2016	2017	2018	2019	Trend	Latest Avg.	LA vs London		2016	2017	2018	2019	LA vs England				
								Rank	Latest Diff.					Rank	Latest Diff.	Trend		
									-5% 0% +5%									
Destinations	KS4 (all state-funded)	Overall Education or Employment /Training Destination	94.3%	93.7%	93.6%	<b>94.0%</b>		<b>94.5%</b>	20th	-0.5%	94.0%	94.1%	94.1%	<b>94.1%</b>	81st	-0.1%		
		Further education college or other FE provider	20.7%	20.3%	22.0%	<b>18.8%</b>		<b>23.0%</b>	23rd	-4.2%	33.9%	33.7%	34.5%	<b>34.8%</b>	141st	-16.0%		
		School Sixth Form - state funded	49.8%	48.1%	46.9%	<b>50.1%</b>		<b>55.4%</b>	22nd	-5.3%	38.0%	37.8%	37.1%	<b>36.8%</b>	35th	+13.3%		
		Sixth Form College	17.6%	19.1%	20.2%	<b>19.8%</b>		<b>11.1%</b>	4th	+8.7%	12.8%	12.9%	13.0%	<b>13.2%</b>	36th	+6.6%		
		Apprenticeships	2.4%	2.0%	1.2%	<b>1.4%</b>		<b>1.4%</b>	10th	0.0%	4.7%	4.7%	4.3%	<b>4.1%</b>	127th	-2.7%		
		Destination not sustained	4.3%	4.9%	5.4%	<b>5.0%</b>		<b>4.1%</b>	26th	+0.9%	5.2%	5.1%	5.0%	<b>5.0%</b>	82nd	0.0%		
		Activity not Captured in Data	1.4%	1.4%	1.0%	<b>1.0%</b>		<b>1.3%</b>	11th	-0.3%	0.8%	0.8%	0.9%	<b>0.9%</b>	102nd	+0.1%		
	KS5 (mainstream, Level 3)	Overall Education or Employment /Training Destination	85.9%	85.1%	86.6%	<b>85.3%</b>		<b>87.2%</b>	24th	-1.9%	89.5%	89.0%	87.8%	<b>88.2%</b>	131st	-2.9%		
		Further education college or other FE provider	8.2%	6.1%	4.0%	<b>3.0%</b>		<b>4.3%</b>	22nd	-1.3%	8.8%	7.3%	6.0%	<b>4.8%</b>	120th	-1.8%		
		Apprenticeships	4.2%	4.3%	3.9%	<b>3.6%</b>		<b>3.6%</b>	10th	0.0%	6.1%	6.5%	7.1%	<b>6.8%</b>	127th	-3.2%		
		UK Higher Education Institution	53.6%	52.7%	54.5%	<b>53.5%</b>		<b>60.5%</b>	27th	-7.0%	50.7%	50.5%	48.9%	<b>51.0%</b>	63rd	+2.5%		
		Top Third of HEIs^	17%	13%	14.6%	<b>12.8%</b>		<b>21.6%</b>	27th	-8.8%	18%	17%	19.4%	<b>16.7%</b>	97th	-3.9%		
		Russell Group (incl. Ox. and Cam.)^	7%	7%	8.1%	<b>9.6%</b>		<b>18.4%</b>	28th	-8.8%	12%	12%	13.9%	<b>14.7%</b>	118th	-5.1%		
		Sustained Employment and/or Training Destination	15.8%	17.3%	19.1%	<b>19.7%</b>		<b>15.4%</b>	5th	+4.3%	21.5%	21.6%	23.4%	<b>23.3%</b>	93rd	-3.6%		
Destination not sustained	8.9%	9.3%	9.1%	<b>9.4%</b>		<b>8.0%</b>	26th	+1.4%	7.3%	7.4%	8.6%	<b>8.1%</b>	117th	+1.3%				
Activity not Captured in Data	5.2%	5.6%	4.3%	<b>5.2%</b>		<b>4.8%</b>	26th	+0.4%	3.2%	3.5%	3.6%	<b>3.7%</b>	135th	+1.5%				

^HE breakdown data for top third of HEIs and Russell Group are for the cohort finishing key stage 5 two years prior to allow for the destination to have been achieved in either of the two years following completion of key stage 5

London rank is generally out of 32. National Rank is generally out of ~151. This may vary slightly if any relevant authorities are suppressed for a particular metric. '-' means data is unavailable. '\*' means no data or that data is suppressed for data protection reasons.

		Croydon					London			England							
		2017	2018	2019	2020	Trend	Latest Avg.	LA vs London		2017	2018	2019	2020	LA vs England			
								Rank	Latest Diff.					Rank	Latest Diff.	Trend	
Participation	Apprenticeship starts (Under 19s)	520	404	356	<b>269</b>												
	Apprenticeship achievements (Under 19s)	310	256	235	<b>159</b>												
	16 and 17 year olds who are NEET or not known activity	10.5%	7.9%	6.2%	<b>5.2%</b>		<b>4.2%</b>	27th	+1.0%	6.0%	6.0%	5.5%	<b>5.5%</b>	90th	-0.3%		
	NEET	1.4%	2.2%	2.1%	<b>2.3%</b>		<b>1.8%</b>	26th	+0.5%	2.8%	2.7%	2.6%	<b>2.7%</b>	60th	-0.4%		
	Not known activity	9.1%	5.7%	4.0%	<b>2.9%</b>		<b>2.3%</b>	26th	+0.6%	3.2%	3.3%	2.9%	<b>2.8%</b>	112th	+0.1%		
	16 year olds in education and training	96%	96%	97%	<b>97%</b>		<b>97%</b>	26th	0%	95%	95%	95%	<b>95%</b>	43rd	+2%		
	Female	96%	97%	98%	<b>98%</b>		<b>98%</b>	22nd	0%	96%	96%	96%	<b>96%</b>	35th	+2%		
	Male	95%	94%	96%	<b>96%</b>		<b>96%</b>	27th	0%	94%	94%	95%	<b>94%</b>	51st	+2%		
	17 year olds in education and training	88%	89%	91%	<b>91%</b>		<b>94%</b>	29th	-3%	89%	89%	90%	<b>90%</b>	59th	+1%		
	Female	90%	91%	93%	<b>93%</b>		<b>95%</b>	27th	-2%	90%	90%	91%	<b>91%</b>	52nd	+2%		
	Male	85%	87%	89%	<b>89%</b>		<b>92%</b>	27th	-3%	88%	88%	88%	<b>88%</b>	63rd	+1%		
	Travel	Secondary pupils from LA attending school in other LAs	27.0%	28.2%	28.0%	<b>28.7%</b>		<b>21.3%</b>	9th	+7.4%	9.4%	9.5%	9.5%	<b>9.3%</b>	11th	+19.4%	
		Secondary pupils from other LAs attending school in LA	16.9%	17.0%	16.6%	<b>15.9%</b>		<b>20.3%</b>	23rd	-4.4%	9.4%	9.5%	9.5%	<b>9.3%</b>	34th	+5.6%	

London rank is generally out of 32. National Rank is generally out of ~151. This may vary slightly if any relevant authorities are suppressed for a particular metric. '-' means data is unavailable. '\*' means no data or that data is suppressed for data protection reasons.



## Data sources

Below is the list of data sources. Full footnotes and methodologies can be found within the individual sources.

### Pupil Characteristics and Behaviour

<https://www.gov.uk/government/collections/statistics-school-and-pupil-numbers>

<https://www.gov.uk/government/collections/statistics-special-educational-needs-sen>

<https://www.gov.uk/government/collections/statistics-exclusions>

<https://www.gov.uk/government/collections/statistics-pupil-absence>

### Secondary Phase Attainment

<https://www.gov.uk/government/collections/statistics-gcses-key-stage-4>

<https://www.gov.uk/government/collections/statistics-attainment-at-19-years>

### Destinations

<https://www.gov.uk/government/collections/statistics-destinations>

### Participation and Travel

<https://www.gov.uk/government/collections/further-education-and-skills-statistical-first-release-sfr>

<https://www.gov.uk/government/publications/neet-and-participation-local-authority-figures>

<https://www.gov.uk/government/publications/participation-in-education-and-training-by-local-authority>

<https://www.gov.uk/government/collections/statistics-school-and-pupil-numbers>

## Glossary

**KS4** - Key Stage 4

**KS5** - Key Stage 5

**FSM** - Free School Meals

**LA** - Local Authority

**APS** - Average Point Score

**IDACI** - Income Deprivation Affecting Children Index

**LSOA** - Lower Super Output Area. An area with population of approximately 1500 used in Census and other datasets.

**NEET** - Not in Education, Employment or Training.

**Level 2** - Attainment of Level 2 equates to achievement of 5 or more GCSEs at grades A\*-C or equivalent qualifications.

**Level 3** - Level 3 equates to achievement of 2 or more A-levels or equivalent qualifications.

**Including Ox. and Cam.** - Including students at the University of Oxford and the University of Cambridge.

**Mainstream** - Not including Independent schools.

*Young People's Education and Skills provides pan-London leadership for 14 to 19 education and training provision in relation to the current and future needs of learners and employers, supports local authorities in undertaking their statutory functions, and assists other stakeholders in planning, policy and provision.*



*London Councils*  
59½ Southwark Street  
London  
SE1 0AL

[www.londoncouncils.gov.uk](http://www.londoncouncils.gov.uk)

*Mime are experts in communicating complex information with clarity within the education sector. We are passionate about using data to improve the life chances of young people.*



*Mime*  
144 Clapham Manor  
Street  
Clapham  
London SW4 6BX

[www.mimeconsulting.co.uk](http://www.mimeconsulting.co.uk)  
[info@mimeconsulting.co.uk](mailto:info@mimeconsulting.co.uk)  
0208 099 4240